

SEE CORNER DETAIL ON THIS SHEET. HIDDEN LINES ARE FOR SUPPORT ANGLES AT BACK SIDE OF LOUVERS. **EXTERIOR ELEVATION ARCHITECTURAL 6" LOUVER** SCALE: 3/8"=1'-0"

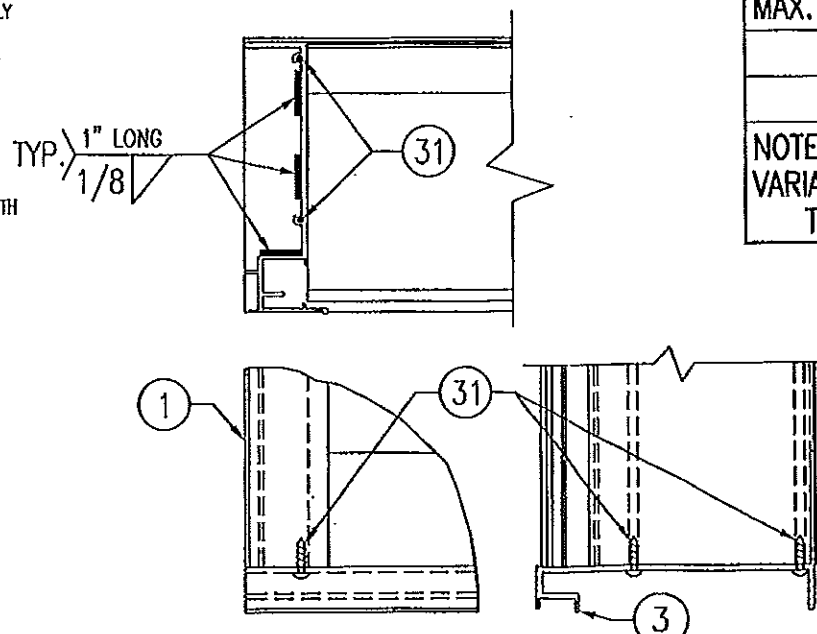
HIDDEN LINES ARE FOR SUPPORT ANGLES AT BACK SIDE OF LOUVERS. VERTICAL MULLION (REF.) **EXTERIOR ELEVATION NON-ARCHITECTURAL 6" LOUVER** SCALE: 3/8"=1'-0"

NOTE: THIS LOUVER SYSTEM MAY CONSIST OF AN UNLIMITED NUMBER OF SECTIONS PROVIDING EACH SECTION DOES NOT EXCEED 59 7/8" X 95 3/4" IN SIZE.

NOTE: THIS LOUVER SYSTEM MAY CONSIST OF AN UNLIMITED NUMBER OF SECTIONS PROVIDING EACH SECTION DOES NOT EXCEED 59 7/8" X 95 3/4" IN SIZE.

GENERAL NOTES:

1. THESE LOUVER SYSTEMS HAVE BEEN TESTED, ANALYZED & APPROVED FOR DESIGN PRESSURES NOT TO EXCEED THOSE SHOWN IN THE "ALLOWABLE DESIGN PRESSURE TABLE(S)".
2. OPENINGS MUST BE PROPERLY DESIGNED & CONSTRUCTED TO TRANSFER WIND LOADS TO THE STRUCTURE.
3. ALL HARDWARE & FASTENERS SHALL BE IN ACCORDANCE WITH THESE DRAWINGS & SHALL NOT VARY UNLESS SPECIFICALLY MENTIONED ON THE DRAWINGS. SPECIFIED ANCHOR EMBED TO BASE MATERIAL SHALL BE BEYOND WALL FINISH OR STUCCO.
4. THE DETAILS & SPECIFICATIONS SHOWN HEREIN REPRESENT THE PRODUCTS TESTED & PROPOSED FOR IMPACT, CYCLIC & UNIFORM STATIC AIR PRESSURE TESTING IN CONFORMANCE WITH THE FLORIDA BUILDING CODE PROTOCOLS TAS-201, 202 & 203 FOR LARGE MISSILE IMPACT LOUVERS.
5. THESE LOUVER SYSTEMS HAVE BEEN DESIGNED IN ACCORDANCE WITH AND MEET THE REQUIREMENTS OF THE FLORIDA BUILDING CODE (FBC) INCLUDING HIGH VELOCITY HURRICANE ZONES (HVHZ).
6. ALL ANCHORS SECURING LOUVER FRAME TO PRESSURE TREATED BUCKS OR WOOD FRAMING SHALL BE CAPABLE OF RESISTING CORROSION CAUSED BY THE PRESSURE TREATING CHEMICALS IN THE WOOD.
7. DETERMINE THE POSITIVE & NEGATIVE DESIGN LOADS TO USE WHEN REFERENCING THESE DOCUMENTS IN ACCORDANCE WITH THE GOVERNING CODE AND GOVERNING WIND VELOCITY. FOR WIND LOAD CALCULATIONS IN ACCORDANCE WITH THE FLORIDA BUILDING CODE, A DIRECTIONALITY FACTOR OF $K_d = 0.85$ MAY BE APPLIED PER THE ASCE 7 STANDARD.
8. NO INCREASE IN ALLOWABLE STRESS HAS BEEN USED IN THE CERTIFICATION OF THIS PRODUCT. WIND LOAD DURATION FACTOR $C_d = 1.6$ WAS USED FOR WOOD SCREW ANALYSIS ONLY.
9. MATERIALS, INCLUDING BUT NOT LIMITED TO STEEL SCREWS, THAT COME INTO CONTACT WITH OTHER DISSIMILAR MATERIALS SHALL MEET THE REQUIREMENTS OF FLORIDA BUILDING CODE CHAPTER 20.
10. MAXIMUM ALLOWABLE INDIVIDUAL PANEL SIZE = 59 7/8" X 95 3/4".
11. MAXIMUM ASSEMBLY SIZE = UNLIMITED WIDTH; UP TO 95 3/4" HEIGHT.
12. ASSEMBLIES/SECTIONS MAY BE STACKED VERTICALLY PROVIDING A STRUCTURAL SUPPORT IS DESIGNED & INSTALLED BY OTHERS TO SUPPORT ALL LOADS TRANSFERRED FROM THE LOUVER ASSEMBLY.
13. MAXIMUM UNSUPPORTED BLADE LENGTH SHALL NOT EXCEED 30"
14. ALL FASTENERS SHALL BE PLATED STEEL OR 304 STAINLESS STEEL.
15. SPECIFIED SUBSTRATES REQUIREMENTS:
 CONCRETE: MIN. 3000 PSI
 MASONRY: MIN. C90 CMU
 WOOD: MIN. GRADE 2; G = 0.55
 STEEL: MIN. 1/8" THICK A36 (36 KSI)
16. THIS SYSTEM HAS NOT BEEN TESTED FOR WATER INFILTRATION RESISTANCE & IS NOT A WATER RESISTANT SYSTEM.
17. EACH LOUVER ASSEMBLY SHALL BE PERMANENTLY LABELED AS FOLLOWS:
 AIR BALANCE INC.
 WYALUSING, PA
 MIAMI-DADE COUNTY PRODUCT CONTROL APPROVED



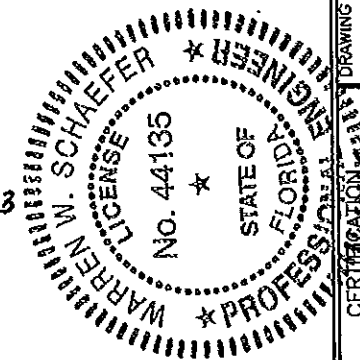
SILL CORNER DETAIL

MAX. ALLOWABLE DESIGN WIND PRESSURE	
POSITIVE	NEGATIVE
150 PSF	150 PSF

NOTE: SEE LOAD TABLE ON SHEET 7 FOR VARIATIONS OF PRESSURES WITH RESPECT TO PANEL WIDTH & CLIP SPACING.

PRODUCT RENEWED as complying with the Florida Building Code
 Acceptance No 13-0422.13
 Expiration Date 07/27/2018
 By [Signature]
 Miami Dade Product Control

PRODUCT REVISED as complying with the Florida Building Code
 Acceptance No 11-1117.18
 Expiration Date 07/27/2018
 By [Signature]
 Miami Dade Product Control



DRAWN BY: K.P.S.	CHECKED BY: W.W.S.
PLOT: 1-32	DATE: 10/14/03
DATE: 04/17/08	DATE: 11/08/11
BY: W.R.M.	BY: W.R.M.
REVISION DESCRIPTION: AT UPDATE FOR CODE COMPLIANCE	BT UPDATE TO CURRENT STANDARDS
NO.:	

MODEL A320 6" LOUVER SYSTEM

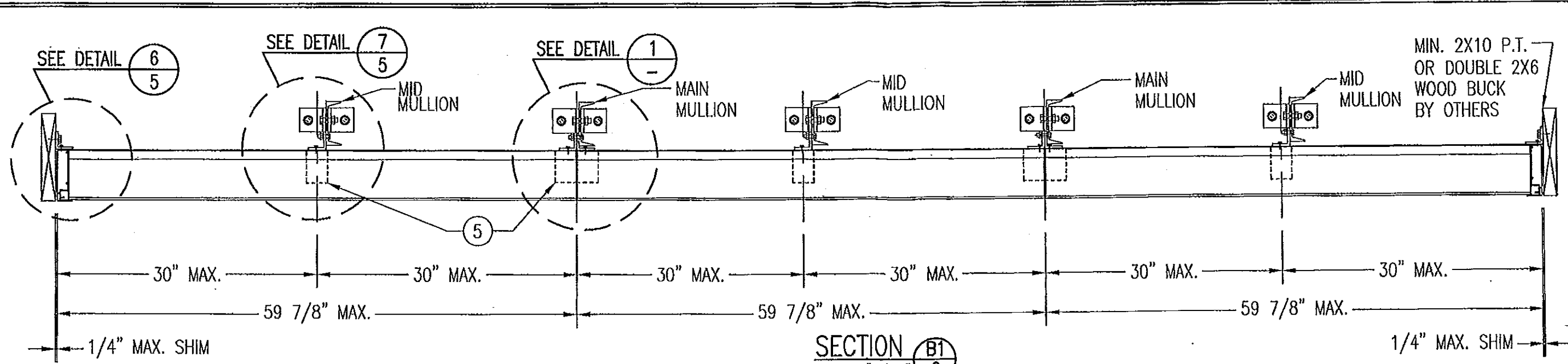
MANUFACTURER:
AIR BALANCE INC.
 450 RIVERSIDE DRIVE,
 WYALUSING, PA 18853
 570-746-1888

CONSULTANTS:
W. W. SCHAEFER ENGINEERING & CONSULTING, P.A. (CA 6809)
 7480 150TH COURT NORTH
 PALM BEACH GARDENS, FL 33418
 PHONE: 561-744-3424

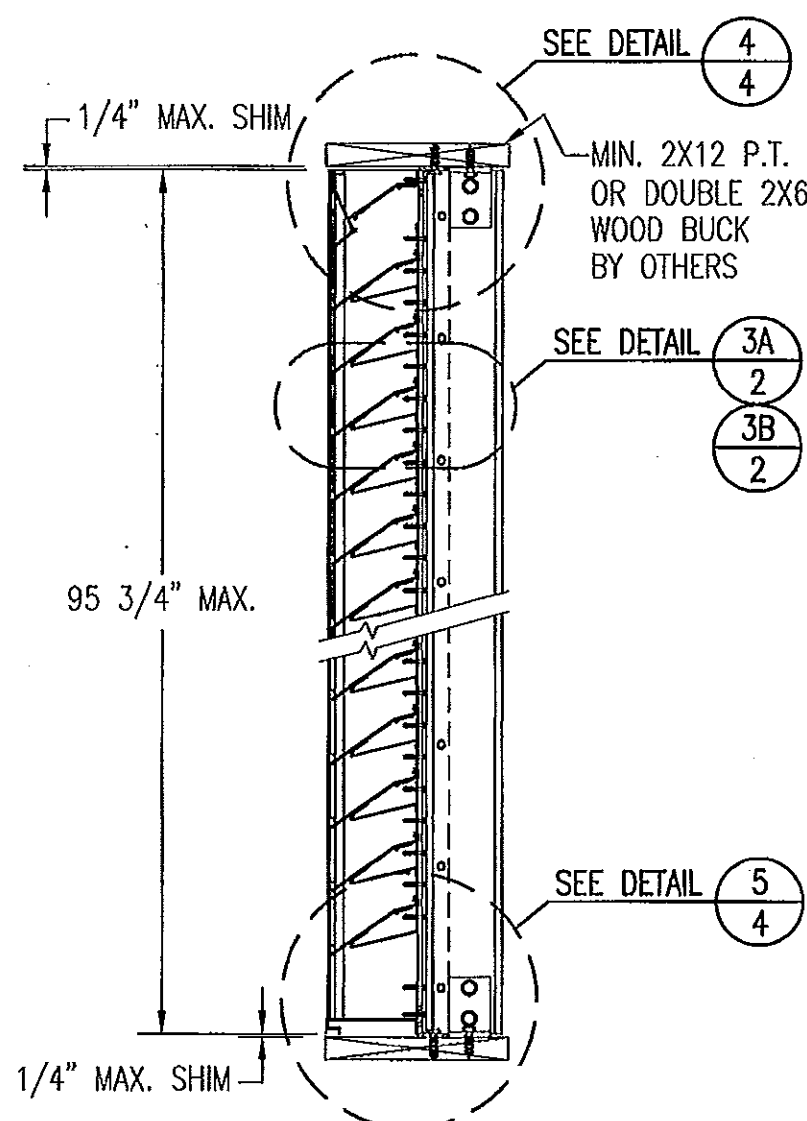
CERTIFICATION:
 DRAWING TITLE: MODEL A320 6" LOUVER SYSTEM
 DATE: NOV 08 2011
 WARRREN W. SCHAEFER, P.E.
 P.E. NO. 44135

DRAWING NO. 1258	REV. B
SHEET NO. 1 OF 7	

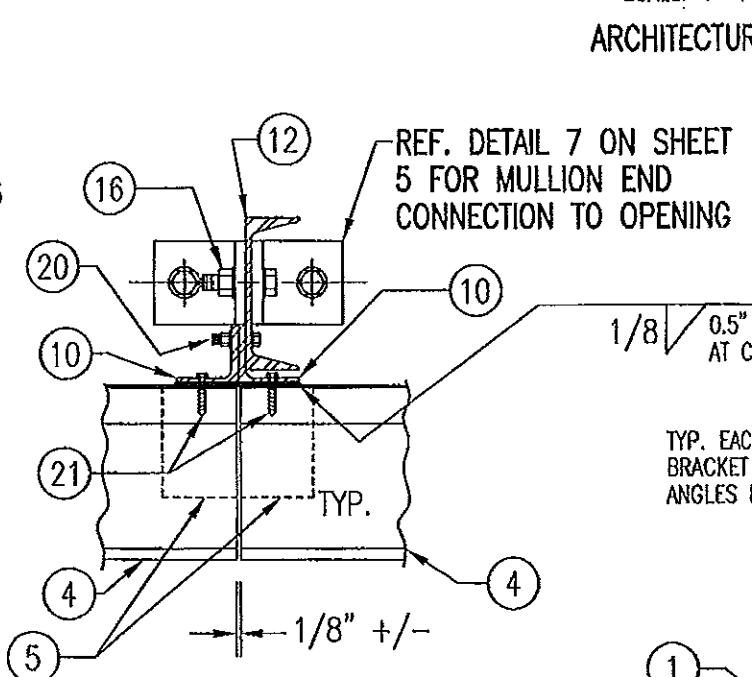
THESE DRAWINGS ARE APPLICABLE ONLY TO THE PRODUCT SPECIFIED. THEY MAY NOT BE USED FOR THE ASSEMBLY AND/OR INSTALLATION OF ANY OTHER PRODUCT NOR MAY THEY BE USED FOR RATIONAL AND/OR LOCAL APPROVAL OF ANY PRODUCT NOT PRODUCED BY THE MANUFACTURER STATED ON THESE DRAWINGS.



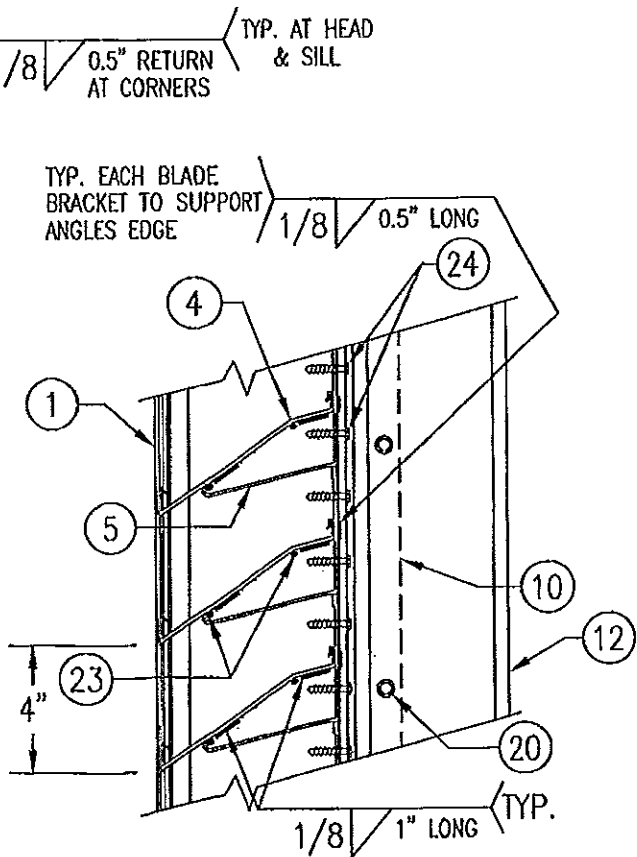
SECTION B1
SCALE: 1"=1'-0"
ARCHITECTURAL LOUVER



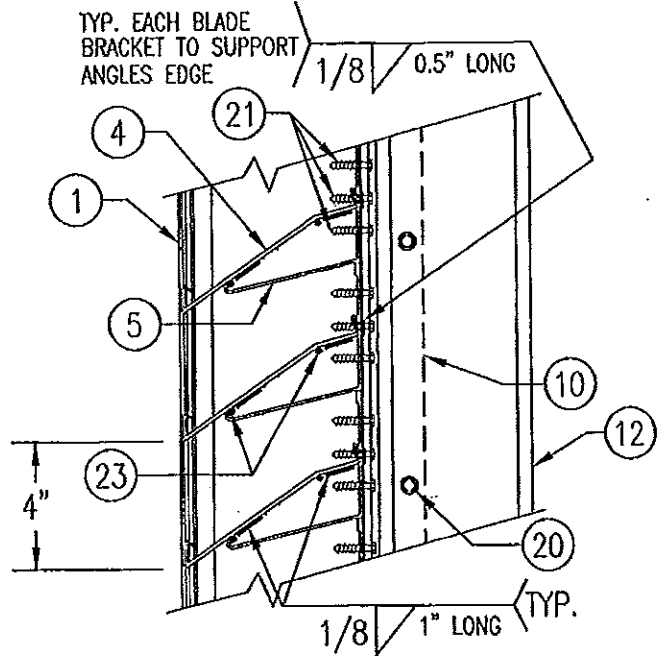
SECTION A1
SCALE: 1"=1'-0"
ARCHITECTURAL LOUVER



DETAIL 1
SCALE: 2"=1'-0"
ARCHITECTURAL LOUVER



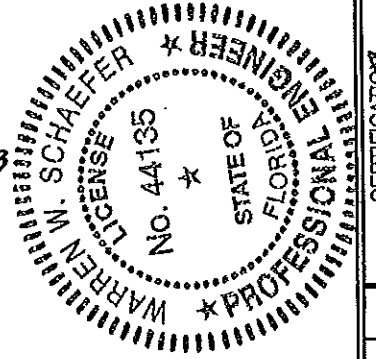
DETAIL 3A
SCALE: 2"=1'-0"
TYP. AT ALL MID SPAN MULLIONS



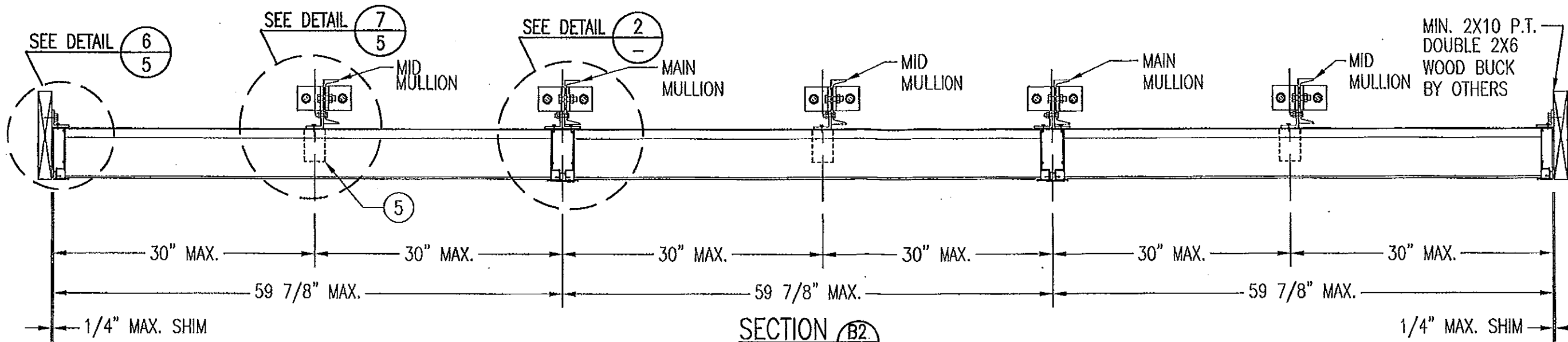
DETAIL 3B
SCALE: 2"=1'-0"
TYP. AT ALL MAIN ARCHITECTURAL MULLIONS

PRODUCT RENEWED
as complying with the Florida
Building Code
Acceptance No 13-0922.13
Expiration Date 07/27/2018
By *[Signature]*
Miami Dade Product Control

PRODUCT REVISED
as complying with the Florida
Building Code
Acceptance No 11-1117.18
Expiration Date 07/27/2013
By *[Signature]*
Miami Dade Product Control

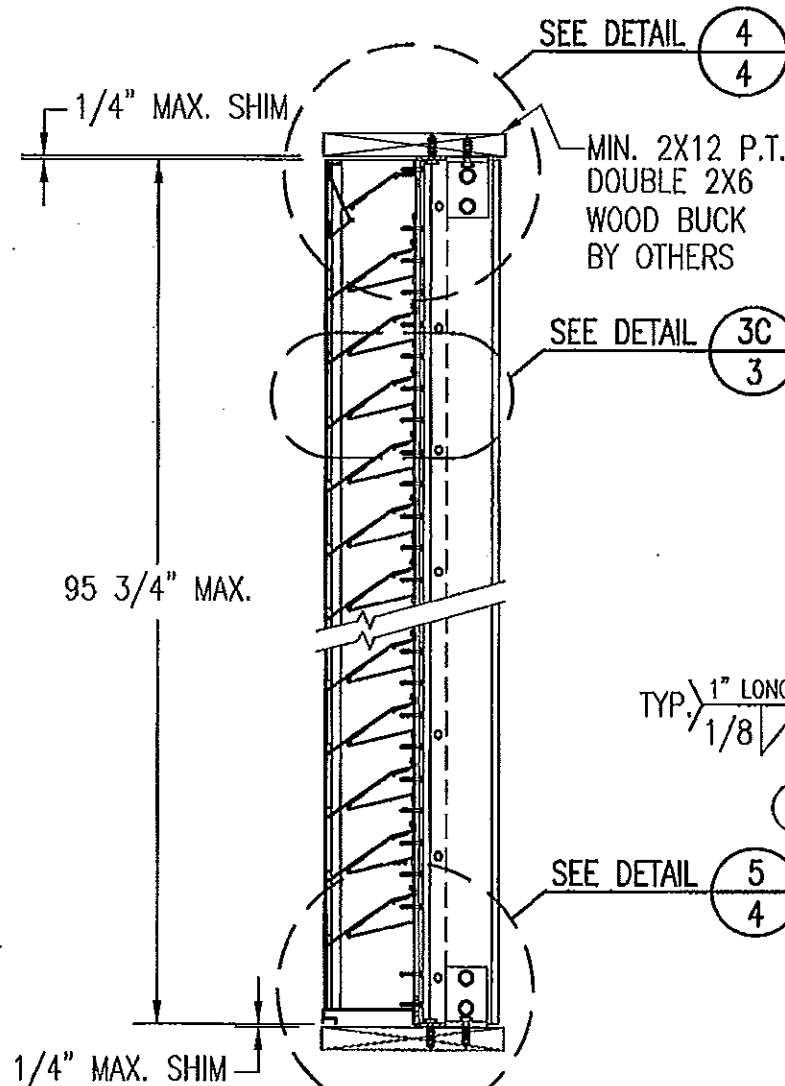


DRAWN BY: K.P.S.	CHECKED BY: W.W.S.
PLOT: 1=12	DATE: 10/14/03
NO.	REVISION DESCRIPTION
BY	DATE
DRAWING TITLE MODEL A320 6" LOUVER SYSTEM	
CONSULTANTS W. W. SCHAEFER ENGINEERING & CONSULTING, P.A. (CA 6809)	MANUFACTURER AIR BALANCE INC.
7480 150TH COURT NORTH PALM BEACH GARDENS, FL 33418 PHONE: 561-744-3424	450 RIVERSIDE DRIVE WYALUSING, PA 18853 570-746-1888
CERTIFICATION NOV 6 2011	WARREN W. SCHAEFER, P.E. P.E. NO. 44135
DRAWING NO. 1258	REV. B
SHEET NO. 2	OF 7



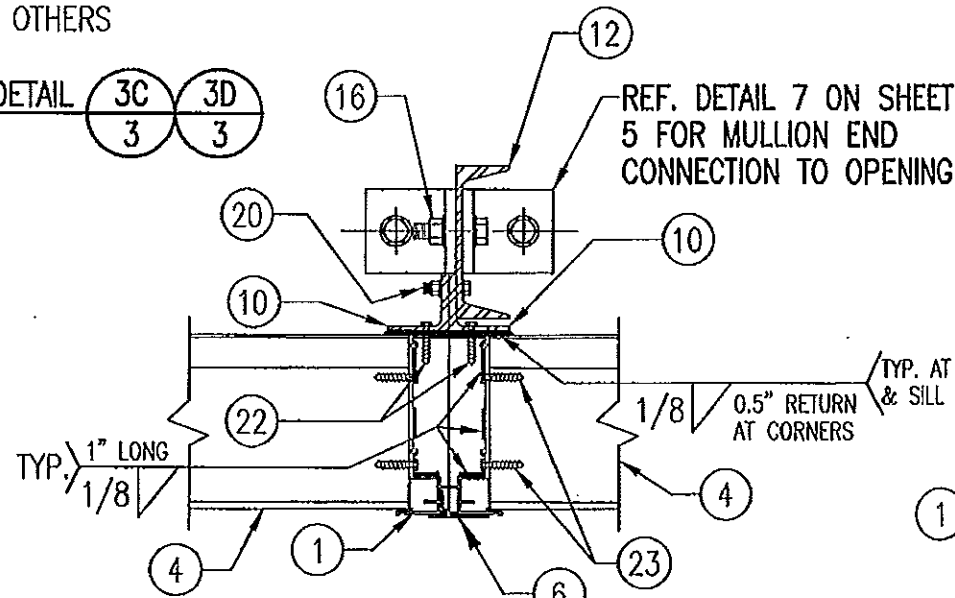
SECTION B2
SCALE: 1"=1'-0" **3**

NON-ARCHITECTURAL LOUVER



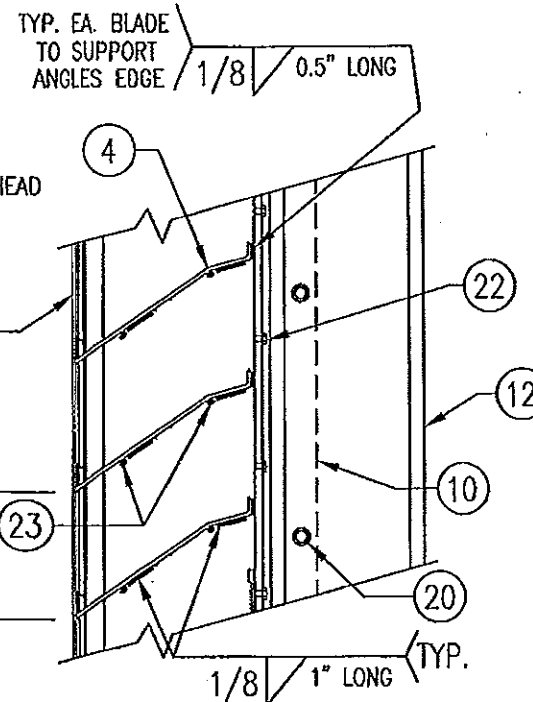
SECTION A2
SCALE: 1"=1'-0" **3**

NON-ARCHITECTURAL LOUVER



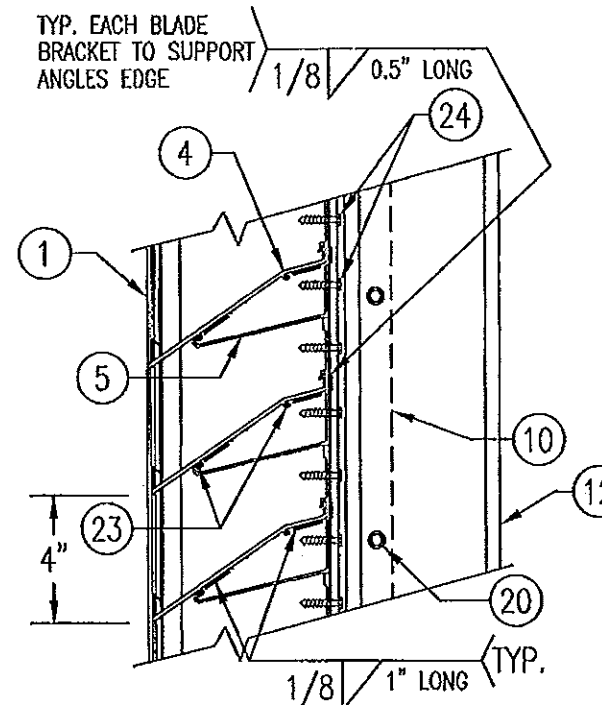
DETAIL 2
SCALE: 2"=1'-0" **3**

NON-ARCHITECTURAL LOUVER
NOTE: SIDE JAMBS ARE ADDITIONALLY FASTENED TO THE SILL WITH 2 NO. 8 X 3/4" SMS THROUGH SILL & INTO JAMB SPLINES.



DETAIL 3C
SCALE: 2"=1'-0" **3**

TYP. AT ALL MAIN NON-ARCHITECTURAL MULLIONS

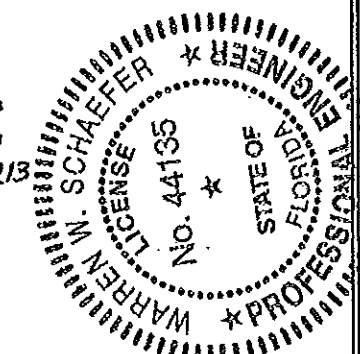


DETAIL 3D
SCALE: 2"=1'-0" **3**

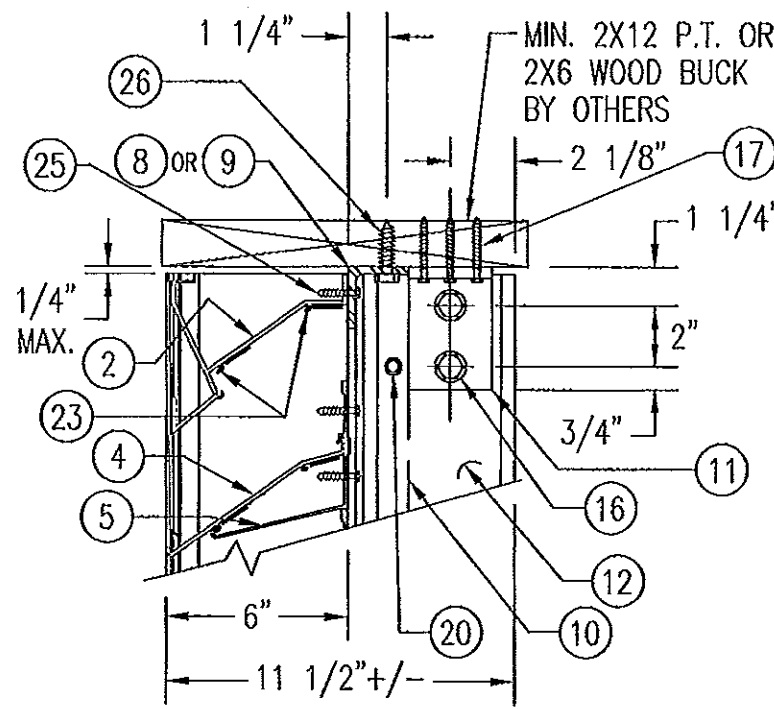
TYP. AT ALL MID SPAN MULLIONS

PRODUCT RENEWED
as complying with the Florida Building Code
Acceptance No 13-0422.13
Expiration Date 07/27/2018
By *[Signature]*
Miami Dade Product Control

PRODUCT REVISED
as complying with the Florida Building Code
Acceptance No 11-1117.18
Expiration Date 07/27/2013
By *[Signature]*
Miami Dade Product Control

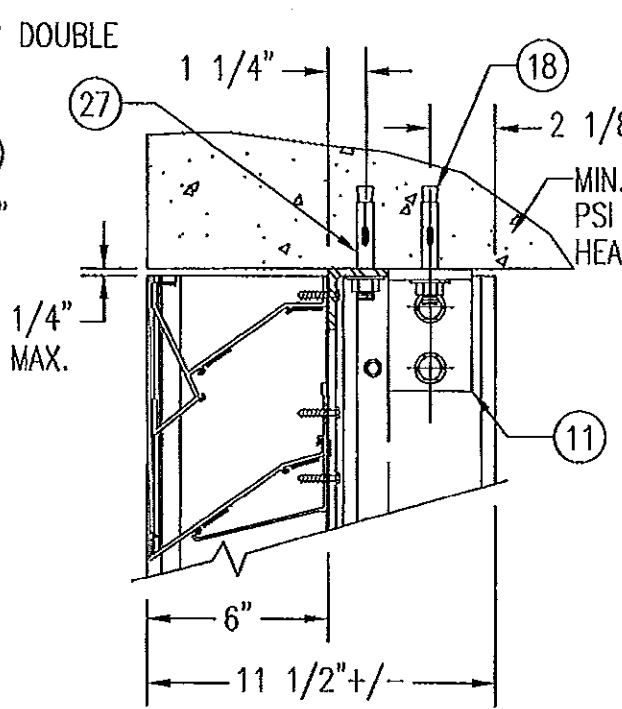


DRAWN BY: K.P.S.	CHECKED BY: W.W.S.
PLOT: 1-12	DATE: 10/14/03
DATE	
BY	
REVISION DESCRIPTION	
NO.	
DRAWING TITLE MODEL A320 6" LOUVER SYSTEM	
MANUFACTURER AIR BALANCE INC. 450 RIVERSIDE DRIVE WYALUSING, PA 18853 570-746-1888	
CONSULTANTS W. W. SCHAEFER ENGINEERING & CONSULTING, P.A. (CA 6809) 7480 150TH COURT NORTH PALM BEACH GARDENS, FL 33418 PHONE 561-744-3424	
DATE NOV 08 2011	
DRAWING NO. 1258	
REV. B	
SHEET NO. 3 OF 7	



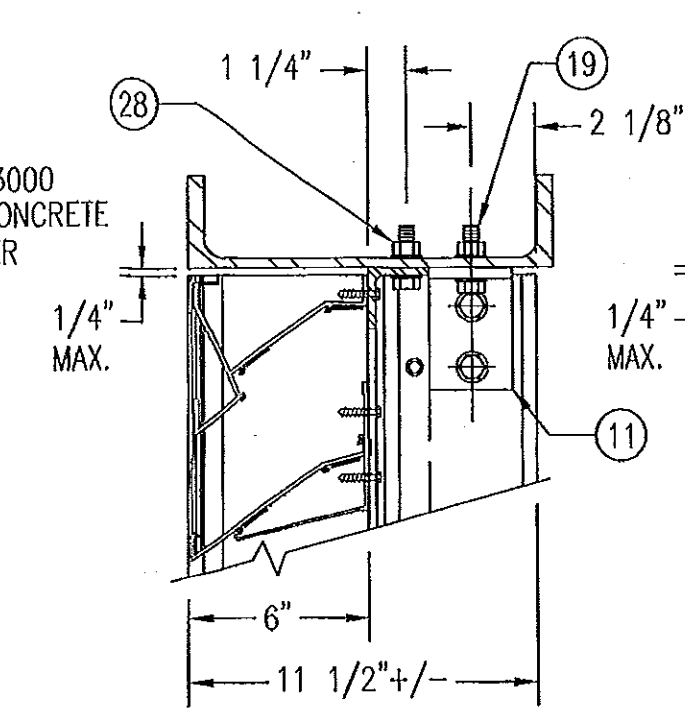
WOOD FRAMED OPENING

SEE "DETAIL 3A & 3B" FOR LOUVER BLADE DETAILS



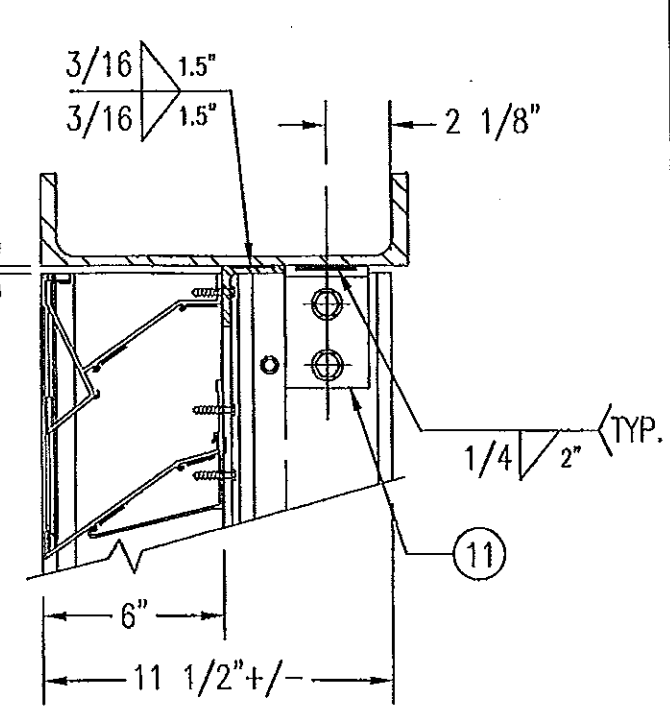
CONCRETE HEAD

SEE "WOOD OPENING" FOR DETAIL NOT SHOWN (MASONRY ACCEPTABLE AT SIDES ONLY AND MAY NOT BE USED AT HEAD OR SILL)



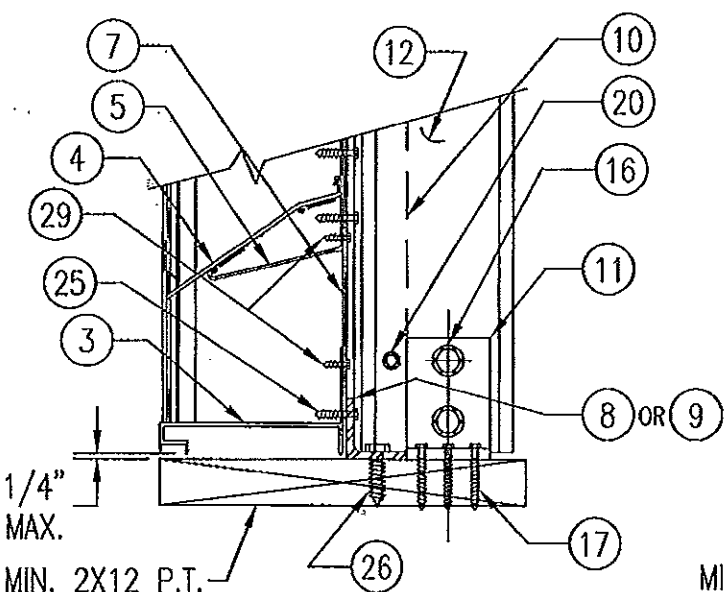
STEEL FRAME OPENING (BOLTED)

SEE "WOOD OPENING" FOR DETAIL NOT SHOWN



STEEL FRAME OPENING (WELDED)

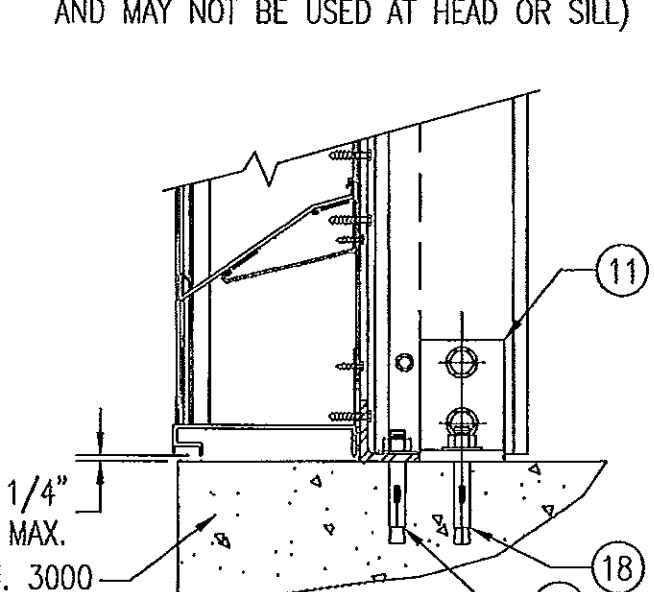
SEE "WOOD OPENING" FOR DETAIL NOT SHOWN



WOOD FRAMED OPENING

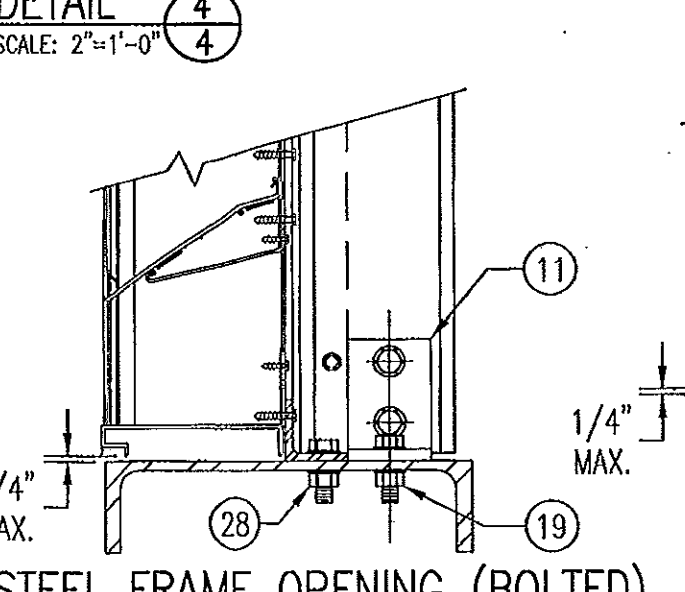
MIN. 2X12 P.T. OR DOUBLE 2X6 WOOD BUCK BY OTHERS

SEE "DETAIL 3A & 3B" FOR LOUVER BLADE DETAILS



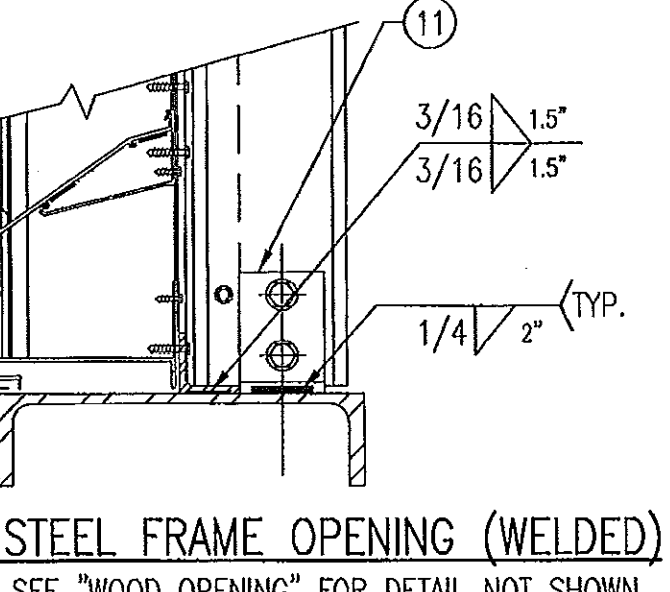
CONCRETE SILL

SEE "WOOD OPENING" FOR DETAIL NOT SHOWN (MASONRY ACCEPTABLE AT SIDES ONLY AND MAY NOT BE USED AT HEAD OR SILL)



STEEL FRAME OPENING (BOLTED)

SEE "WOOD OPENING" FOR DETAIL NOT SHOWN



STEEL FRAME OPENING (WELDED)

SEE "WOOD OPENING" FOR DETAIL NOT SHOWN

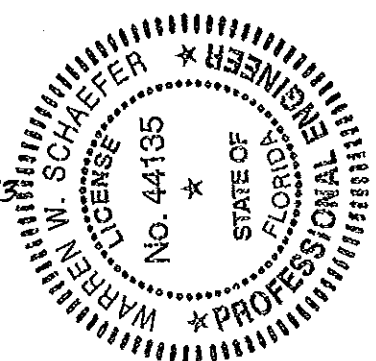
DETAIL 4
SCALE: 2"=1'-0"

DETAIL 5
SCALE: 2"=1'-0"

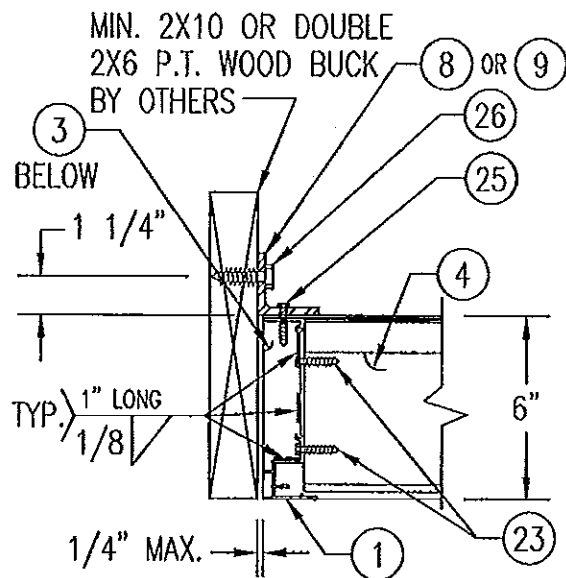
MASONRY MAY ONLY BE USED AT SIDES OF LOUVER PANELS & MAY NOT BE USED AT THE HEAD OR SILL.

PRODUCT RENEWED as complying with the Florida Building Code
Acceptance No 13-0427.13
Expiration Date 07/27/2018
By *[Signature]*
Miami Dade Product Control

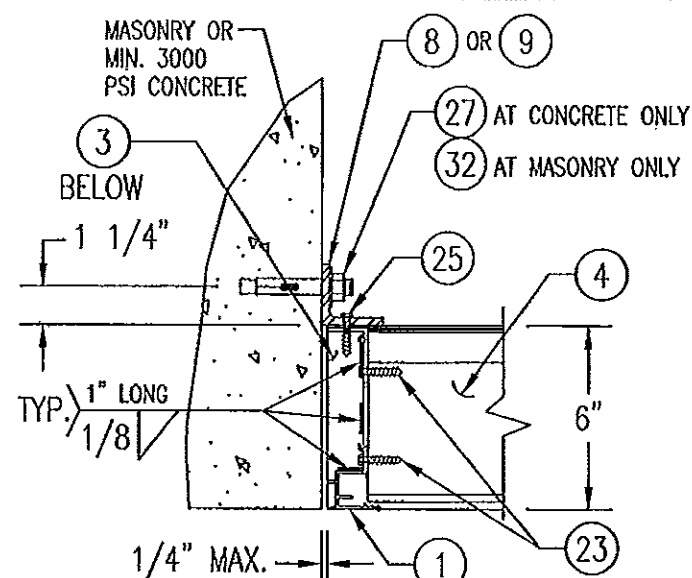
PRODUCT REVISED as complying with the Florida Building Code
Acceptance No 11-1117.18
Expiration Date 07/27/2018
By *[Signature]*
Miami Dade Product Control



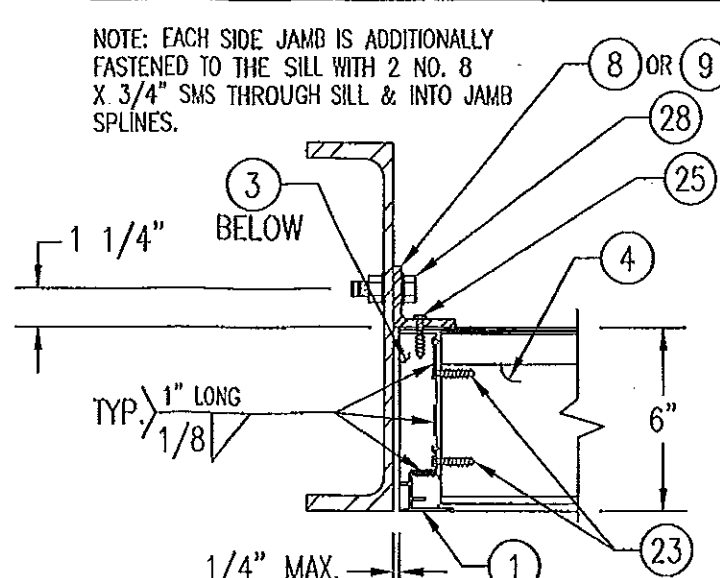
DRAWN BY: K.P.S.		CHECKED BY: W.W.S.	
PLOT: 1-6		DATE: 10/14/03	
DATE	BY	REVISION DESCRIPTION	NO.
DRAWING TITLE MODEL A320 6" LOUVER SYSTEM			
CONSULTANTS W. W. SCHAEFER ENGINEERING & CONSULTING, P.A. (CA 6809) 7480 150TH COURT NORTH PALM BEACH GARDENS, FL 33418 PHONE: 561-744-3424		MANUFACTURER AIR BALANCE INC. 450 RIVERSIDE DRIVE WYALUSING, PA 18853 570-746-1888	
CERTIFICATION NOV 08 2011 WARREN W. SCHAEFER, P.E. P.E. NO. 44135			
DRAWING NO. 1258		REV. B	
SHEET NO. 4 OF 7			



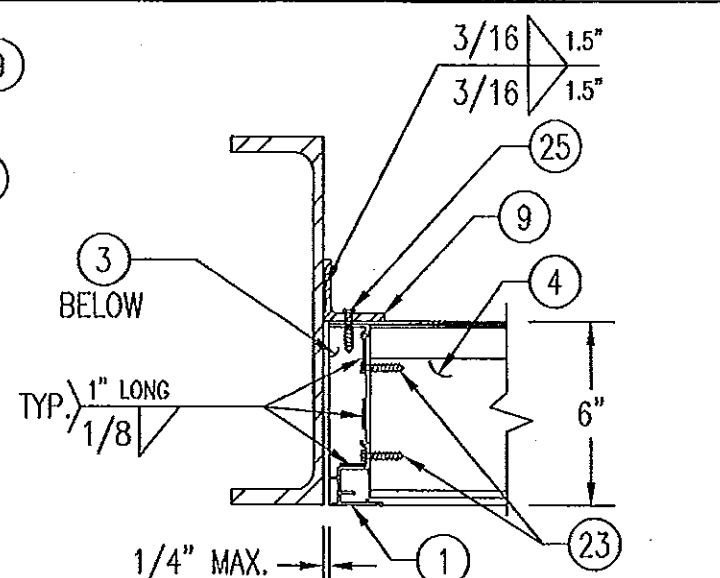
WOOD FRAMED OPENING



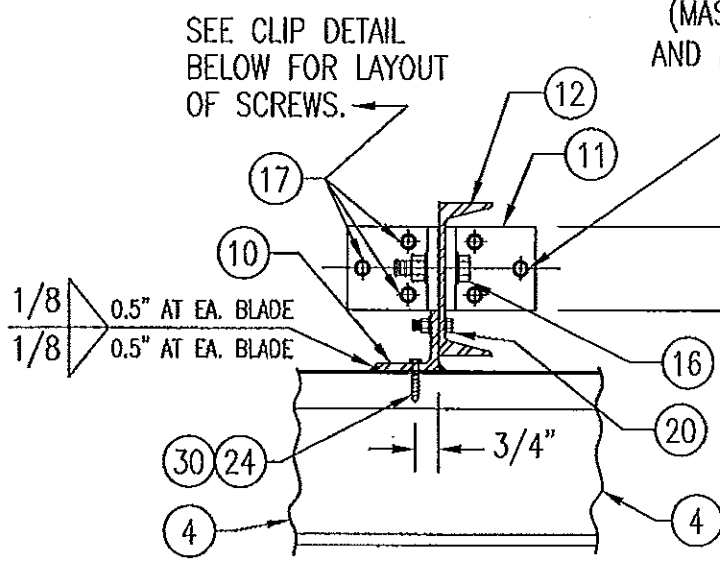
CONCRETE/MASONRY OPENING



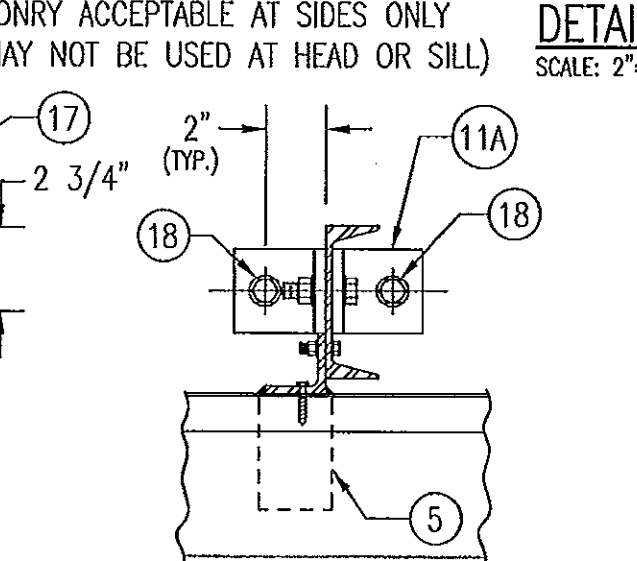
STEEL FRAME OPENING (BOLTED)



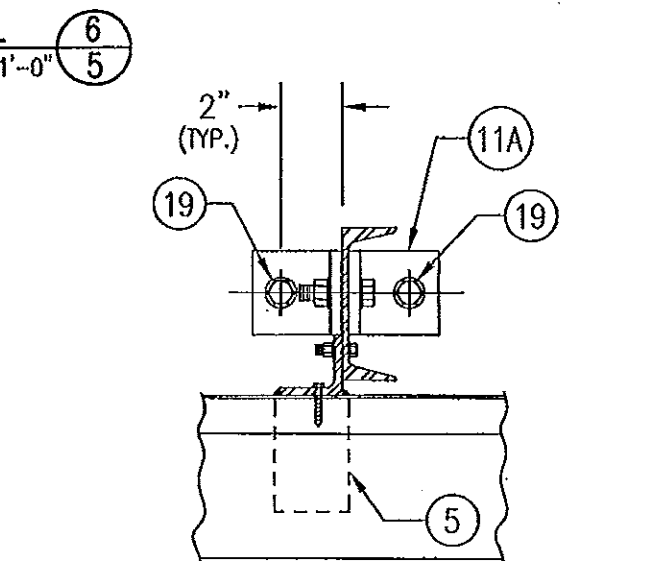
STEEL FRAME OPENING (WELDED)



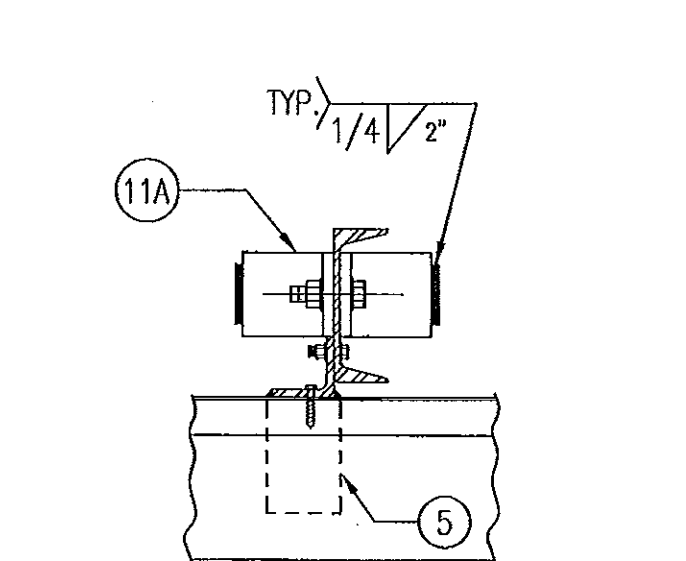
WOOD FRAMED OPENING



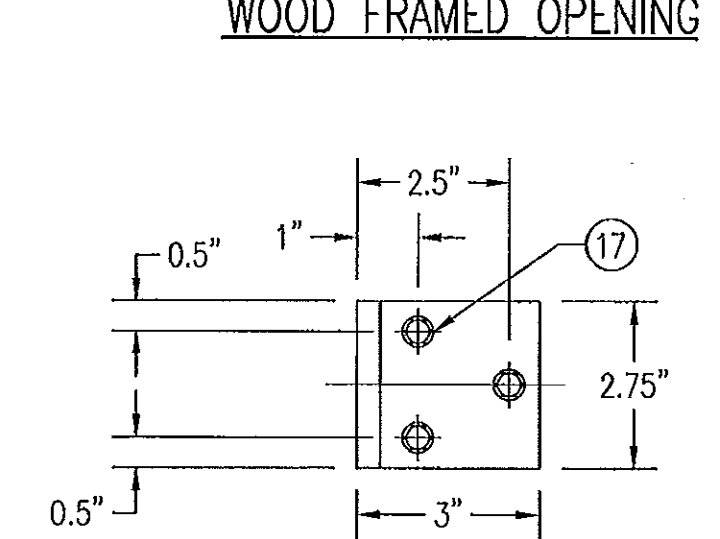
CONCRETE HEAD & SILL



STEEL FRAME OPENING (BOLTED)



STEEL FRAME OPENING (WELDED)



MULLION CLIP DETAIL @ WOOD INSTALLATION

SEE "WOOD OPENING" FOR DETAIL NOT SHOWN (MASONRY ACCEPTABLE AT SIDES ONLY AND MAY NOT BE USED AT HEAD OR SILL)

SEE "WOOD OPENING" FOR DETAIL NOT SHOWN

SEE "WOOD OPENING" FOR DETAIL NOT SHOWN

MASONRY MAY ONLY BE USED AT SIDES OF LOUVER PANELS & MAY NOT BE USED AT THE HEAD OR SILL.

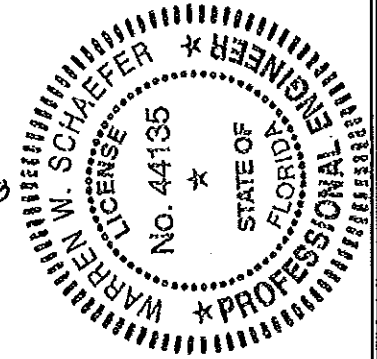
DETAIL 6/5
SCALE: 2"=1'-0"

DETAIL 7/5
SCALE: 2"=1'-0"

NOTE: EACH SIDE JAMB IS ADDITIONALLY FASTENED TO THE SILL WITH 2 NO. 8 X 3/4" SMS THROUGH SILL & INTO JAMB SPLINES.

PRODUCT RENEWED as complying with the Florida Building Code
Acceptance No 13092213
Expiration Date 07/27/2018
By [Signature]
Miami Dade Product Control

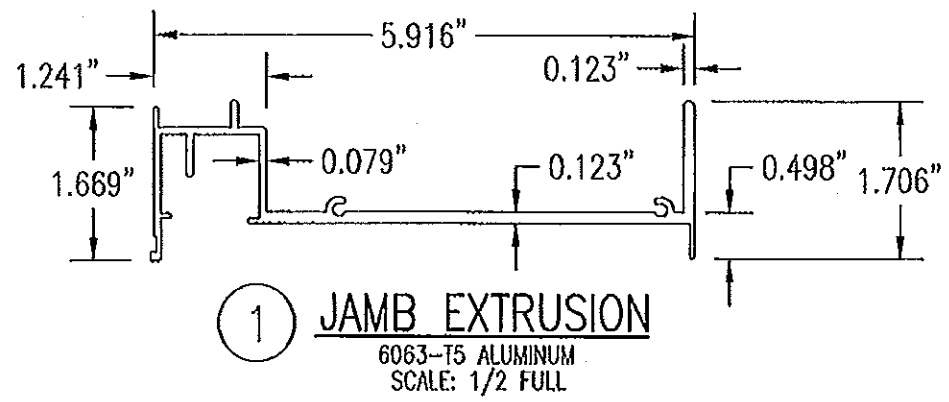
PRODUCT REVISED as complying with the Florida Building Code
Acceptance No 11-1117,18
Expiration Date 07/27/2013
By [Signature]
Miami Dade Product Control



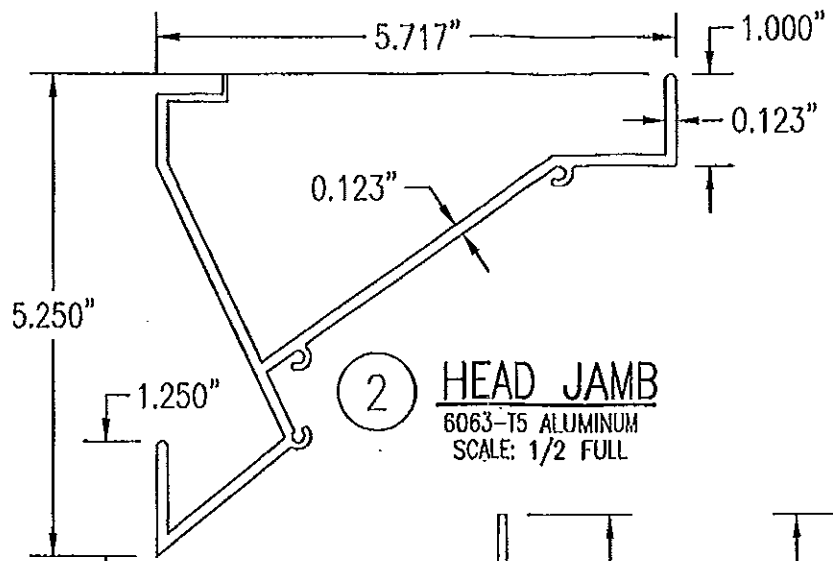
DRAWN BY: K.P.S.	CHECKED BY: W.M.S.
PLOT: 1-B	DATE: 10/14/03
NO.	REVISION DESCRIPTION

DRAWING TITLE: MODEL A320 6" LOUVER SYSTEM
 CONSULTANTS: W. W. SCHAEFER ENGINEERING & CONSULTING, P.A. (CA 6809)
 7480 150TH COURT NORTH, PALM BEACH GARDENS, FL 33418
 PHONE: 561-744-3424
 MANUFACTURER: AIR BALANCE INC.
 450 RIVERSIDE DRIVE, WYALUSING, PA 18853
 570-746-1888

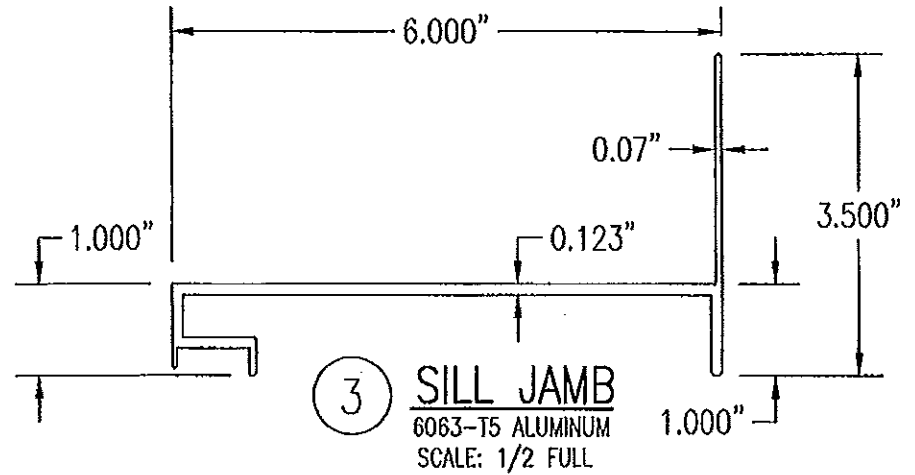
CERTIFICATION: [Signature]
 NOV 8 2011
 WARREN W. SCHAEFER, P.E.
 P.E. NO. 44135



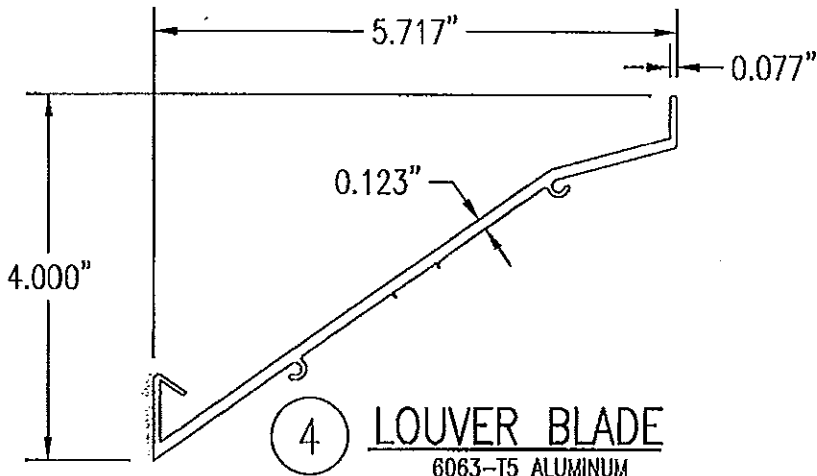
① **JAMB EXTRUSION**
6063-T5 ALUMINUM
SCALE: 1/2 FULL



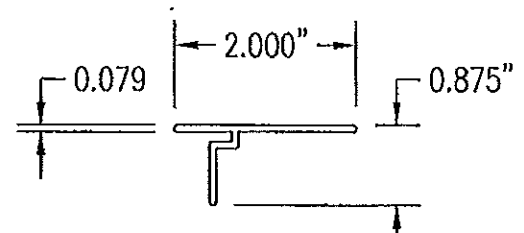
② **HEAD JAMB**
6063-T5 ALUMINUM
SCALE: 1/2 FULL



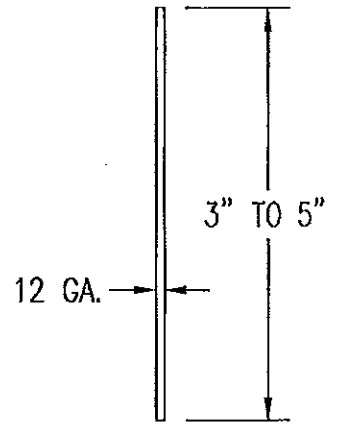
③ **SILL JAMB**
6063-T5 ALUMINUM
SCALE: 1/2 FULL



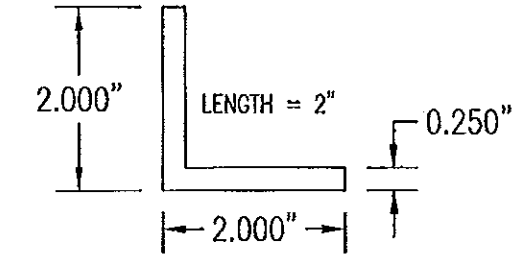
④ **LOUVER BLADE**
6063-T5 ALUMINUM
SCALE: 1/2 FULL



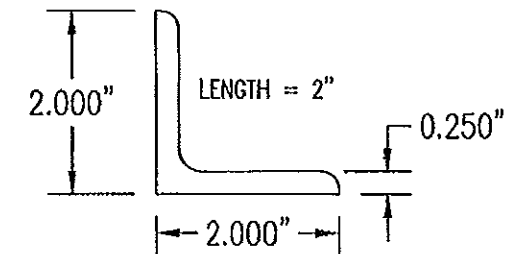
⑥ **MULLION CAP**
6063-T5 ALUMINUM
SCALE: 1/2 FULL



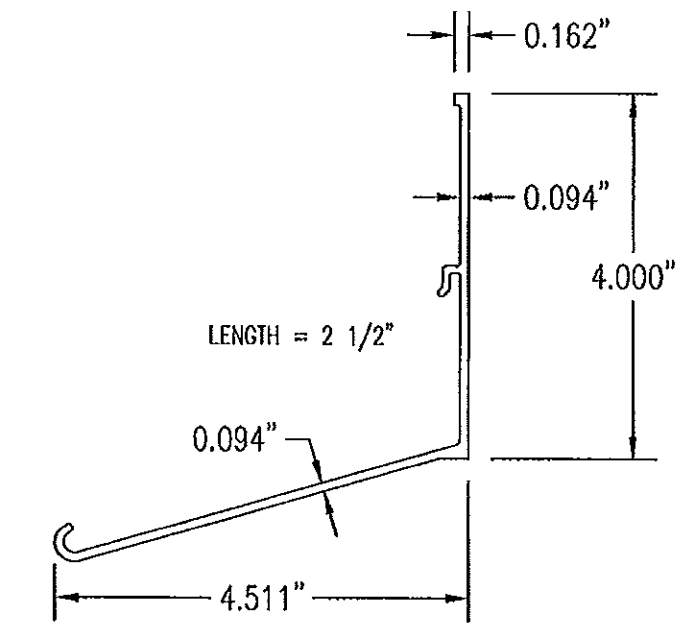
⑦ **SILL PLATE**
3003/5005 ALUMINUM
SCALE: 1/2 FULL



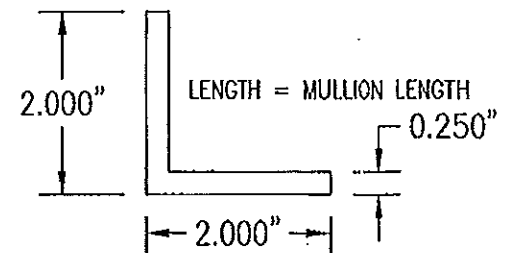
⑧ **CONNECTION ANGLE**
6063-T5 ALUMINUM
SCALE: 1/2 FULL



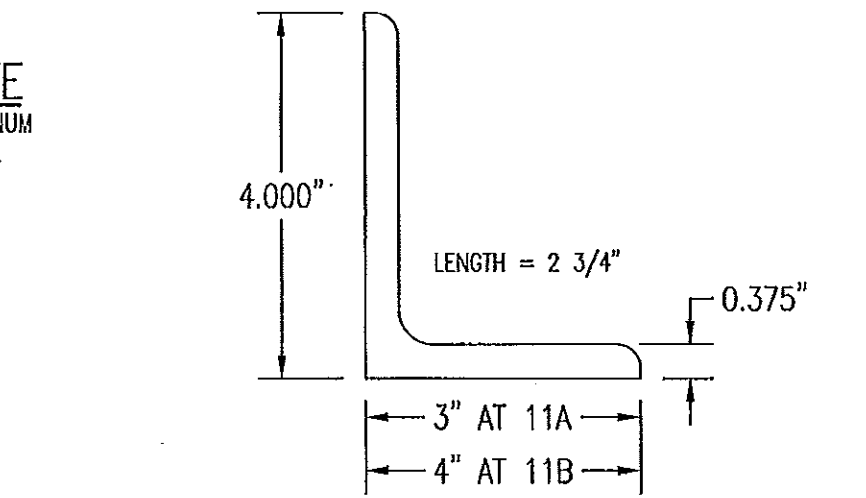
⑨ **CONNECTION ANGLE**
A36 STEEL
SCALE: 1/2 FULL



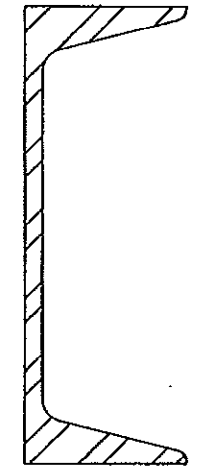
⑤ **BLADE SUPPORT BRACKET**
6063-T5 ALUMINUM
SCALE: 1/2 FULL



⑩ **MULLION ANGLE**
6063-T5 ALUMINUM
SCALE: 1/2 FULL



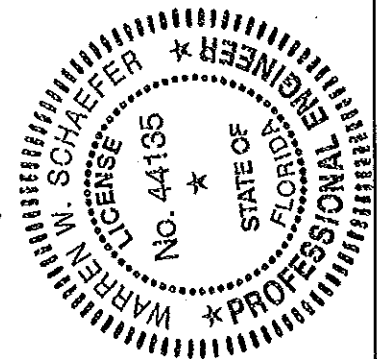
⑪A ⑪B **MULLION END CONNECTION ANGLE**
A36 STEEL
SCALE: 1/2 FULL



⑫ **C5X6.7 MULLION**
A36 STEEL
SCALE: 1/2 FULL

PRODUCT RENEWED
as complying with the Florida
Building Code
Acceptance No 13-042213
Expiration Date 07/27/2018
By *[Signature]*
Miami Dade Product Control

PRODUCT REVISED
as complying with the Florida
Building Code
Acceptance No 11-1117.18
Expiration Date 07/27/2013
By *[Signature]*
Miami Dade Product Control



DRAWN BY: K.P.S.	CHECKED BY: W.W.S.
PLOT: 1-2	DATE: 10/14/03
DATE	
BY	
REVISION DESCRIPTION	
NO.	

DRAWING TITLE: MODEL A320 6" LOUVER SYSTEM

MANUFACTURER: AIR BALANCE INC.
450 RIVERSIDE DRIVE
WYALUSING, PA 18855
570-746-1888

CONSULTANTS: W. W. SCHAEFER ENGINEERING & CONSULTING, P.A. (CA 6809)
7480 150TH COURT NORTH
PALM BEACH GARDENS, FL 33418
PHONE: 561-744-3424

CERTIFICATION

NOV 08 2011
WARREN W. SCHAEFER, P.E.
P.E. NO. 44135

DRAWING NO.	REV.
1258	B
SHEET NO.	
6	OF 7

ALLOWABLE WIND PRESSURE VS. JAMB CLIP SPACING AND PANEL WIDTH

PANEL WIDTH (INCHES)	CLIP SPACING (INCHES)	ALLOWABLE PRESSURE WITH MID SPAN MULLION (PSF)	ALLOWABLE PRESSURE WITHOUT MID SPAN MULLION (PSF)
16	8	150	150
	12	150	150
	16	150	140
	20	150	105
	24	150	70
20	8	150	150
	12	150	140
	16	150	112
	20	150	84
	24	150	56
24	8	150	140
	12	150	117
	16	150	93
	20	150	70
	24	125	47
28	8	150	82
	12	150	68
	16	150	54
	20	150	41
	24	107	27
30	8	150	62
	12	150	52
	16	150	41
	20	140	31
	24	93	-
36	8	150	-
	12	150	-
	16	150	-
	20	125	-
	24	83	-
42	8	150	-
	12	150	-
	16	142	-
	20	107	-
	24	71	-
48	8	150	-
	12	150	-
	16	125	-
	20	93	-
	24	62	-
54	8	150	-
	12	138	-
	16	111	-
	20	83	-
	24	55	-
60	8	150	-
	12	125	-
	16	100	-
	20	75	-
	24	50	-

MATERIAL LIST

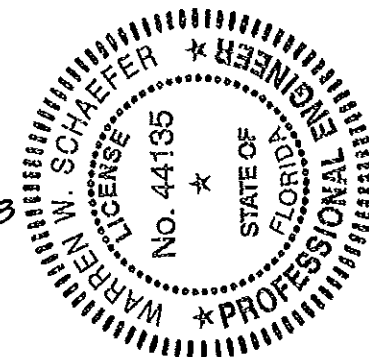
NO.	DESCRIPTION	NOTES/SPECIFICATIONS
PARTS/EXTRUSIONS		
1	SIDE JAMB FRAME/MULLION	6063-T5 ALUMINUM
2	HEAD FRAME	6063-T5 ALUMINUM
3	SILL FRAME	6063-T5 ALUMINUM
4	LOUVER BLADE	6063-T5 ALUMINUM
5	BLADE SUPPORT BRACKET (2 1/2" LONG)	6063-T5 ALUMINUM
6	MULLION CAP	6063-T5 ALUMINUM; FULL LENGTH OF MULLION JAMBS
7	SILL PLATE	3003/5005 ALUMINUM; FULL LENGTH OF PANEL SILL
8	L2X2X1/4 JAMB CONNECTION ANGLE 2" LONG	6063-T5 ALUMINUM; WITHIN 4" OF JAMB ENDS & SPACED PER LOAD TABLE ON SHT. 2
9	L2X2X1/4 OPTIONAL JAMB CONNECTION ANGLE 2" LONG	A36 STEEL; WITHIN 4" OF JAMB ENDS & SPACED PER LOAD TABLE ON SHT. 2
10	L2X2X1/4 CONTINUOUS MULLION CONNECTION ANGLE	6063-T5 ALUMINUM; FULL LENGTH OF CHANNEL MULLION
11	L4X3X3/8 MULLION END CONNECTION ANGLE 2 3/4" LONG	A36 STEEL; 2 PER MULLION END
12	C5X6.7 MULLION	A36 STEEL; FULL HEIGHT OF PANELS
13	OPEN	
14	OPEN	
15	OPEN	
FASTENERS		
16	1/2" X 2" A307 HEX HEAD PLATED STEEL OR S/STL BOLT	WITH FLAT WASHERS, LOCK WASHER & NUT; 2 PER MULLION END
17	NO. 14 S.S. SMS SCREWS	3 PER MULLION END CLIP WITH MIN. 1 1/2" WOOD EMBED
18	5/8" X 2 1/4" SLEEVE ANCHOR WITH FLAT WASHER	USA KINGPIN ANCHOR; 1 PER CHANNEL END CONNECTION ANGLE INTO CONCRETE ONLY
19	1/2" X 2" A307 HEX HEAD PLATED STEEL OR S/STL BOLT	WITH FLAT WASHERS, LOCK WASHER & NUT; 1 PER CHANNEL END CONNECTION ANGLE INTO STEEL FRAME
20	5/16-18 UNC X 1 1/2" HEX HEAD STEEL OR S/STL BOLT	WITH FLAT WASHER, LOCK WASHER & NUT; WITHIN 4" OF MULLION ENDS & MAX. 8" O.C.
21	NO. 14 X 1 1/4" HILTI TEK SCREW	3 AT EACH LOUVER BLADE SUPPORT BRACKET AT ARCHITECTURAL MAIN MULLIONS
22	NO. 14 X 1 1/4" HILTI TEK SCREW	WITHIN 1 1/4" OF MULLION ENDS & MAX. 4" O.C. INTO FRAME
23	NO. 8 X 3/4" SMS	2 PER EACH LOUVER BLADE END THROUGH JAMB & INTO BLADE SPLINES
24	NO. 14 X 1 1/4" HILTI TEK SCREW	2 AT EACH LOUVER BLADE SUPPORT BRACKET AT ALL MIDSPAN MULLIONS
25	NO. 14 X 1 1/4" HILTI TEK SCREW	2 PER EACH HEAD, SILL & SIDE JAMB CONNECTION ANGLE
26	1/2" X 2" LAG SCREW WITH FLAT WASHER	1 PER EACH HEAD, SILL & SIDE JAMB CONNECTION ANGLE INTO WOOD FRAME
27	5/8" X 2 1/4" SLEEVE ANCHOR WITH FLAT WASHER	USA KINGPIN ANCHOR; 1 PER EACH HEAD, SILL & SIDE JAMB CONNECTION ANGLE INTO CONCRETE ONLY
28	1/2" X 2" HEX HEAD A307 PLATED STEEL OR S/STL BOLT	WITH FLAT WASHERS, LOCK WASHER & NUT; 1 PER EA. JAMB CONNECTION ANGLE INTO STEEL FRAME
29	NO. 8 X 3/4" SMS	2 SCREWS WITHIN 4" OF SILL PLATE ENDS & MAX. 12" O.C. (SILL PLATE TO SILL JAMB AND FIRST LOUVER BLADE)
30	NO. 14 X 1 1/4" HILTI TEK SCREW	1 AT EACH MULLION ANGLE INTO HEAD & SILL JAMB
31	NO. 8 X 3/4" SMS SCREWS	2 PER FRAME SILL CORNER THROUGH SILL & INTO JAMB SPLINES
32	3/8" X 1 7/8" SLEEVE ANCHOR WITH FLAT WASHER	RED HEAD DYNABOLT WITH MIN. 1 1/2" BLOCK/CONCRETE EMBED (1 PER FRAME SUPPORT CLIP)

PRESSURE TABLE NOTES:

1. WHEN THE PANEL WIDTH IS 30" OR LESS, NO MID SPAN MULLION IS REQUIRED PROVIDING COMPLIANCE WITH THE TABLE.
2. ALL PRESSURES IN THIS TABLE ARE FOR BOTH POSITIVE & NEGATIVE WIND PRESSURE.

PRODUCT RENEWED
as complying with the Florida
Building Code
Acceptance No 13-0422/13
Expiration Date 07/27/2016
By *[Signature]*
Miami Dade Product Control

PRODUCT REVISED
as complying with the Florida
Building Code
Acceptance No 11-1117/18
Expiration Date 07/27/2013
By *[Signature]*
Miami Dade Product Control



DRAWN BY: K.P.S.	CHECKED BY: W.W.S.		
PLOT: 1=1	DATE: 10/14/03		
DATE	BY	REVISION DESCRIPTION	NO.
DRAWING TITLE		DRAWING NO.	
MODEL A320 6" LOUVER SYSTEM		1258	
CONSULTANTS		REV.	
W. W. SCHAEFFER ENGINEERING & CONSULTING, P.A. (CA 6809) 7480 150TH COURT NORTH PALM BEACH GARDENS, FL 33418 PHONE 561-744-3424		B	
MANUFACTURER		SHEET NO.	
AIR BALANCE INC. 450 RIVERSIDE DRIVE WYALUSING, PA 18853 570-746-1888		7 OF 7	